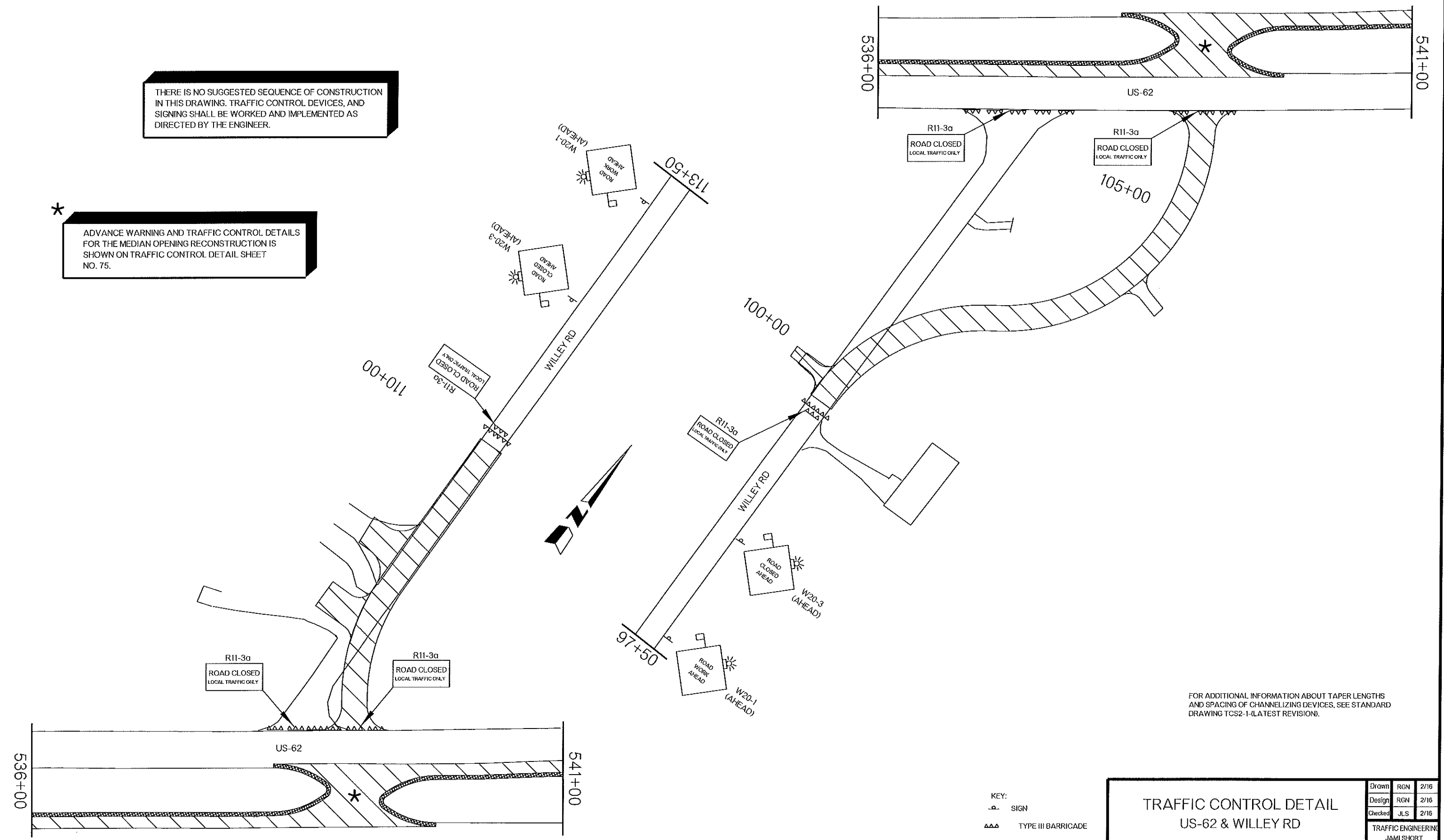


REV. NO.	DESCRIPTION	REVISIONS	DATE

THERE IS NO SUGGESTED SEQUENCE OF CONSTRUCTION IN THIS DRAWING. TRAFFIC CONTROL DEVICES, AND SIGNING SHALL BE WORKED AND IMPLEMENTED AS DIRECTED BY THE ENGINEER.

* ADVANCE WARNING AND TRAFFIC CONTROL DETAILS FOR THE MEDIAN OPENING RECONSTRUCTION IS SHOWN ON TRAFFIC CONTROL DETAIL SHEET NO. 75.



FOR ADDITIONAL INFORMATION ABOUT TAPER LENGTHS AND SPACING OF CHANNELIZING DEVICES, SEE STANDARD DRAWING TCS2-1-(LATEST REVISION).

- KEY:
- P- SIGN
 - ▲▲▲ TYPE III BARRICADE
 - ▨ WORK AREA

TRAFFIC CONTROL DETAIL US-62 & WILLEY RD		Drawn	RGN	2/16
		Design	RGN	2/16
		Checked	JLS	2/16
		TRAFFIC ENGINEERING JAMI SHORT		
STATE OF OKLAHOMA		DEPARTMENT OF TRANSPORTATION		
		STATE JOB NO. 27958(04) SHEET NO. 81		

DRAWING NOT TO SCALE